






MARKETED BY :  **TEAMEX**
RETAIL LTD
421, 4th Floor, Vishala Supreme, Opp. Torrent
Power, SP Ring Road, Nikol, Ahmedabad- 382350.

COUNTRY OF ORIGIN : INDIA
Cust. Care : +91 7069 121213
support@teamex.in | www.teamex.in

 teamex.official  teamex_ltd  teamexretail



"Healthcare is a journey of hope, where every step forward brings us closer to wellness."

BERRY WELLNESS DRINK

Teamex 'Berry Drink' is a premium herbal nutritional formulation crafted to support overall wellness, natural energy, and antioxidant nourishment. Enriched with a powerful blend of Acai Berry, Blueberry, Strawberry, Cranberry, Raspberry, Cherry, and other nutrient-rich berries, this refreshing formula helps the body feel light, active, and revitalized. Its multi-berry composition supports digestive balance, assists the body's natural functions, and promotes overall well-being. Rich in natural antioxidants and botanical extracts, it also helps support immunity, maintain healthy-looking skin, and encourage a balanced and active lifestyle.

Pure Berry Power,
Pure Wellness.



M.R.P. : ₹2499 incl. of all taxes
Net. Content : 1000 ml

Key Active Ingredients

Acai Berry, Blackberry, Elderberry, Goji Berry, Raspberry, Strawberry, Cranberry, Blueberry, Blackcurrant, Red Currant, Gooseberry, Cherry, Mulberry, Aloe Vera, Honey, and other natural extracts.

Directions for Use

- Mix 30 ml with normal or lukewarm water and consume daily.
- Best taken on an empty stomach.
- For better results, consume twice daily.



KEY BENEFITS



Supports overall wellness and vitality.



Helpful in supporting natural immunity.



Assists in maintaining digestive balance.



Helps maintain natural skin glow, hydration, and freshness.



Helpful in reducing physical and mental fatigue.



Helps the body feel active, refreshed, and energized.

NONI WELLNESS DRINK

Our Noni Wellness Drink is an Ayurvedic health drink made from natural ingredients like Noni, Aloe Vera, Amla, Ashwagandha, Brahmi, Tulsi, Grapes and Garcinia. It is rich in antioxidants, vitamins and nutrients that help strengthen immunity and support overall health. This drink helps improve digestion, supports natural body cleansing and helps reduce daily tiredness while maintaining energy. Regular use helps keep the body balanced, supports stress management and promotes a healthy lifestyle. Suitable for daily use by the whole family.

**FOR IMPROVE
OVERALL HEALTH**



M.R.P. : ₹1799 incl. of all taxes
Net. Content : 1000 ml

ACTIVE INGREDIENTS

Aal (Noni), Aloevera, Amla, Trikatu, Ashwagandha, Brahmi, Grapes,

DIRECTION TO USE

Adult: 30 ml daily with a glass of lukewarm water on an empty stomach in the morning.

Kids: 15 ml daily with a glass of lukewarm water on an empty stomach in the morning.



KEY BENEFITS



A powerful antioxidant



Great immune booster



Improves digestion



May support heart health



Improves skin health



Help reduce joint pain

SEA BUCKTHORN WELLNESS DRINK

Sea Buckthorn Wellness Drink is a rich source of Omega 3, 6, 7, and 9. It is an excellent antioxidant and is beneficial for hair, skin, and digestion. Its high content of vitamin C and amino acids helps boost immunity. Sea Buckthorn Wellness Drink may offer various health benefits, from supporting heart health to protecting against diabetes, stomach ulcers, and skin damage. It is rich in vitamins, minerals, antioxidants, and other plant compounds that are potentially beneficial for overall health. Additionally, it may aid heart health by reducing blood pressure, improving cholesterol levels, and protecting against blood clots.

**FOR PERFECT ANTI-
OXIDANT SUPPLEMENT**



M.R.P. : ₹1999 incl. of all taxes
Net. Content : 1000 ml

ACTIVE INGREDIENTS

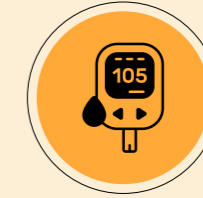
Sea Buckthorn (Hippophae Rhamnoides) - 7000 mg, Curcumin - 40 mg, Ashwagandha (Withania Somnifera) 20 mg, Giloy (Tinospora Cordifolia) - 20 mg, Apricot (Prunus Armeniaca) - 10 mg, Rhododendron (Rhododendron Arboreum) 10 mg, Shatavari (Asparagus Racemosus) - 10 mg, Black Pepper - 10 mg

DIRECTION TO USE

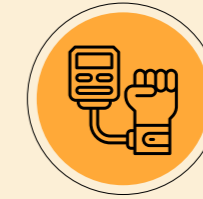
Take 30 ml daily mixed with 30 ml of warm water, either in the morning or evening. It is preferred to take it on an empty stomach.



KEY BENEFITS



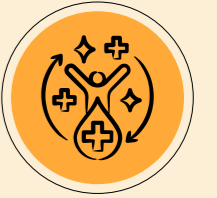
May protect against diabetes



It may help to maintain blood pressure levels



May help fight cancer cells



It is rich in antioxidants



Protects your skin



Helps to stabilize cellular damage

RED ALOE VERA WELLNESS DRINK

Red Aloe Vera is a special gift from nature that is much stronger than regular Aloe Vera. It is believed to be up to 22 times more powerful, which makes it very helpful for overall health. It is naturally rich in amino acids, minerals, vitamins, and antioxidants like anthraquinone that keep the body healthy inside and outside. With the goodness of Aloe barbadensis miller juice, guava extract, Vitamin C, and other safe natural ingredients, Red Aloe Vera juice helps support daily wellness in a natural and effective way.



M.R.P. : ₹999 incl. of all taxes
Net. Content : 1000 ml

ACTIVE INGREDIENTS

Aloe barbadensis miller juice, guava juice ext., vitamin C, citric acid, potassium sorbate, sodium Benzoate, xanthan gum.

DIRECTION TO USE

Adult : 30ml twice a day with a glass of normal water before food. Kids : 15ml twice a day with a glass of normal water before food.



KEY BENEFITS



Supports healthy digestion
and relieves constipation



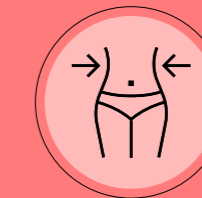
Helps remove toxins
and cleanse the body



Boosts immunity and
keeps you energetic



Promotes clear skin
and reduces inflammation



Aids in natural
weight management



Protects heart, liver,
and kidney health

**ENHANCES ENERGY
& STAMINA**

LIVO-FIT WELLNESS DRINK

Teamex Livo-Fit Wellness Drink is a premium herbal liver wellness drink formulated to nourish the liver and support its natural functioning. Enriched with natural ingredients, this drink helps balance the extra burden on the liver caused by a modern lifestyle, unbalanced diet, irregular routine, and fatigue. It supports the liver's natural detox process, aids in better digestion, and promotes overall metabolic wellness. Its regular consumption helps maintain a feeling of lightness, energy balance, and overall liver health.

**THE RIGHT SUPPORT
FOR YOUR LIVER**



M.R.P. : ₹2299 incl. of all taxes
Net. Content : 1000 ml

ACTIVE INGREDIENTS

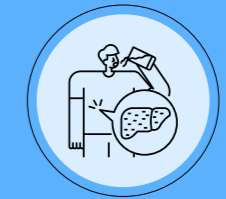
Milk Thistle , Kasni (Chicory) , Bhui Amla, Punarnava , Neem, Kutki, Turmeric (Haldi).

DIRECTION TO USE

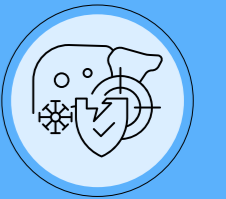
Take 30 ml daily mixed with normal or lukewarm water. It is preferred to be taken on an empty stomach. For better results, consume twice a day.



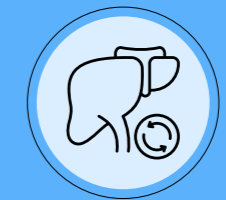
KEY BENEFITS



Provides nourishment to the liver



Supports natural liver functions



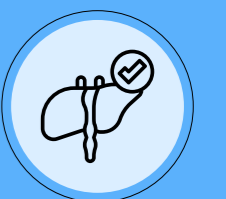
Helps promote liver detoxification



Helps maintain metabolism



Helps maintain digestion and energy balance



Suitable for a daily liver wellness routine

PILOCARE WELLNESS DRINK

Teamex Pilocare Wellness Drink is specially formulated to support discomfort associated with piles (hemorrhoids), digestive concerns, and regular bowel movement. It helps maintain gut balance, supports comfortable bowel movement, and promotes the smooth functioning of the digestive system. By supporting regular and strain-free bowel movement, it may help reduce pressure on the rectal veins, thereby providing comfort in piles. Along with a balanced diet and a healthy lifestyle, regular consumption may help provide relief from pain, itching, swelling, burning sensation, heaviness, and digestive discomfort associated with piles.

**RELIEF FROM
CONSTIPATION AND
PILES, FOR A HAPPIER LIFE**



M.R.P. : ₹2299 incl. of all taxes
Net. Content : 1000 ml

ACTIVE INGREDIENTS

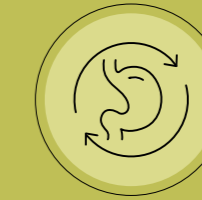
Lodhra, Amla, Bibhitaki, Haritaki, Turmeric, Punarnava, Vidanga, Nishoth, Nagkesar, Bael, Draksha, Chitrak, Sunth, Bakayan, Vacha, Aloe Vera.

DIRECTION TO USE

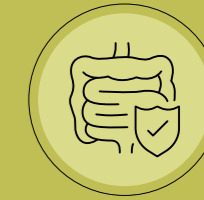
Take 30 ml daily mixed with normal or lukewarm water. Preferably consume on an empty stomach. For better results, consume twice daily.



KEY BENEFITS



Supports
digestive function



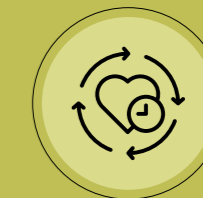
Helps maintain
gut balance



Supports regular
bowel movement



Helpful in discomfort
associated with piles
(hemorrhoids)



Suitable for daily
wellness routine

SHEWELL CARE DRINK

Teamex Shewell Care Drink is an Ayurvedic wellness drink specially formulated to support women's physical and hormonal needs. It helps manage hormonal discomfort, improve energy levels, and support inner strength. Designed keeping in mind the challenges of a modern lifestyle—such as fatigue, digestive discomfort, and general weakness—this formulation supports overall women's wellness. Enriched with a balanced blend of natural herbs like Ashoka, Arjuna, Shatavari, Ashwagandha, Shankhpushpi, and other traditional ingredients, it supports menstrual health, reproductive wellness, bone strength, immunity, and overall physical vitality.

**Her Balance
Her Strength**



M.R.P. : ₹2399 incl. of all taxes
Net. Content : 1000 ml

ACTIVE INGREDIENTS

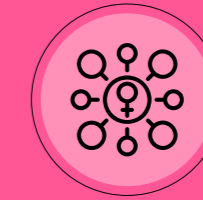
Ashoka, Arjuna, Pushkarmool, Ashwagandha, Shatavari, Lodhra, Mulethi, Amla, Shankhpushpi, Haritaki, Musalli, Nagkesar, Bael, Mushtaka, Kachnar, and Gokhru.

DIRECTION TO USE

Take 30 ml daily with normal or lukewarm water / milk, Preferably consume on an empty stomach, For best results, consume twice a day



KEY BENEFITS



Supports
hormonal balance



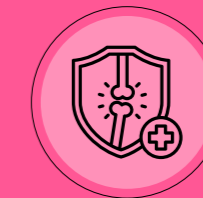
Helps improve
energy and stamina



Supports menstrual
and reproductive health



Aids better
digestion



Helps strengthen
immunity and bones



Promotes natural skin
glow and overall wellness

THYROCARE WELLNESS DRINK

Teamex Thyrocare Wellness Drink is a herbal wellness drink specially formulated to support healthy thyroid function. It helps maintain hormonal balance, supports metabolism, and helps sustain the body's energy levels. Enriched with natural herbs such as Kanchanar, Guggul, and Moringa, this drink not only supports healthy thyroid function but also helps manage stress, digestive imbalance, and fatigue associated with modern lifestyles.

**Balanced Thyroid,
Healthy Life**



M.R.P. : ₹2350 incl. of all taxes
Net. Content : 1000 ml

ACTIVE INGREDIENTS

Pippali, Black Pepper, Shunthi (Dry Ginger), Turmeric, Tulsi, Mint, Khas, Aloe Vera, Kachnar, Bibhitaki, Salai Guggul, Haritaki, Amla, Moringa, Brahmi.

DIRECTION TO USE

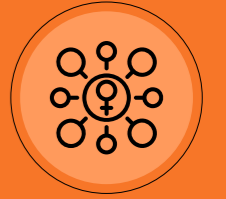
Take 30 ml daily mixed with normal or lukewarm water. Preferably consume on an empty stomach. For better results, consume twice daily.



KEY BENEFITS



Supports healthy thyroid function



Helps maintain hormonal balance



Supports metabolism



Helps sustain energy levels



Supports digestion and stress management



Promotes overall wellness and lifestyle balance

ROCKET ENERGY

Teamex Rocket Energy is a herbal wellness drink thoughtfully formulated to support men's physical capacity, endurance, focus, and everyday performance needs. This blend of rare Ayurvedic herbs helps enhance stamina, vitality, and concentration throughout the day, while providing long-lasting, steady, and natural energy without any side effects, fatigue or sudden energy drops. Rocket Energy aids in reducing tiredness caused by a fast-paced lifestyle, continuous work, and mental stress.

**Strength,
Endurance, Focus**



M.R.P. : ₹2399 incl. of all taxes
Net. Content : 1000 ml

ACTIVE INGREDIENTS

Kaunch (Mucuna Pruriens), Safed Musli, Gokhru, Balchhad, Akarkara, Ashwagandha, Amla, Talamakhana, Nutmeg.

DIRECTION TO USE

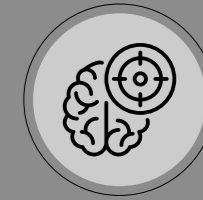
Take 30 ml daily with normal or lukewarm water, Preferably consume on an empty stomach, For better results, consume twice daily.



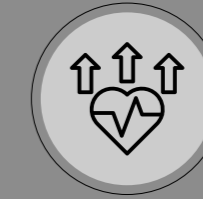
KEY BENEFITS



Supports stamina and energy levels



Helps maintain focus and mental alertness



Promotes vigor and vitality



Provides clean, natural energy for body and mind



Suitable for a daily men's wellness routine

TULSI DROPS

Tulsi Drops contain a natural blend of five different types of Tulsi, which help relieve colds, coughs, and flus. Its antiviral and antioxidant properties make it a natural immunity booster. With its healing benefits, these Tulsi drops are a go-to remedy for cold, cough, flu, and sore throat due to their antiseptic and analgesic properties. The five types of Tulsi ensure optimal levels of antiviral, antifungal, and antibacterial properties, which enhance your immune response.

**FOR IMPROVE
OVERALL HEALTH**



M.R.P. : ₹300 incl. of all taxes
Net. Content : 20 ml

ACTIVE INGREDIENTS

shyam tulsi, ram tulsi, van tulsi, arjak tulsi, Kapoor

DIRECTION TO USE

Children: Two (2) drops in a glass of water, twice a day.

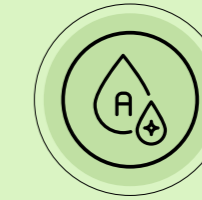
Adult: Four (4) drops in a glass of water, twice a day.

In illness: Four (4) drops in a glass of water, twice a day.

In sick condition: Six (6) drops in a glass of water, twice a day.



KEY BENEFITS



Acts as powerful
antioxidant



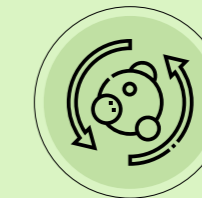
Contains the extracts
of 5 types of tulsi leaves



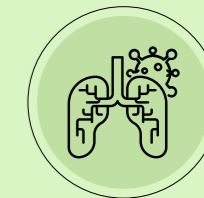
Good for digestion, skin,
joints, and liver health



Helps in stress &
weight management



Promotes healthy
metabolism



Useful in respiratory
problems

AJWAIN DROPS

Teamex Ajwain Drops offer a variety of health and medicinal benefits. It is extremely beneficial for digestive weakness, cholera, diarrhoea, and stomachache. It helps to stimulate the digestive system and detoxifies your body. Active enzymes in ajwain drops improve the flow of stomach acids, which can help to relieve indigestion, bloating, and gas.

**FOR DIGESTION &
DIGESTIVE PROBLEMS**



M.R.P. : ₹300 incl. of all taxes
Net. Content : 20 ml

ACTIVE INGREDIENTS

Ajwain Extracts

DIRECTION TO USE

Take 2-3 drop of Ajwain Drops with Drinking Water Twice a Day



KEY BENEFITS



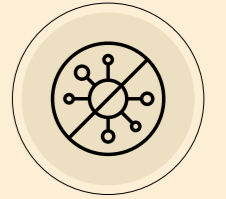
Promotes a healthy immune system



Helps to cure gastric and indigestion problems



Improves digestion



Anti-fungal and anti-bacterial



Anti-inflammatory and curative properties



Helpful in cough, cold, and fever

CMD WATER DROPS

Teamex CMD is not just a water drop but a complete water treatment solution that enhances health. Healthy water always has four essential qualities: alkalization, antioxidants, micro-clustering, and minerals. These drops provide all these beneficial properties and contribute to overall well-being. Teamex CMD helps maintain your body's pH level above 8 and supports a balanced ORP level, as recommended by healthcare professionals. Teamex CMD contain natural ingredients that promote positive health and boost internal vitality.

FOR ALKALINE MINERAL WATER



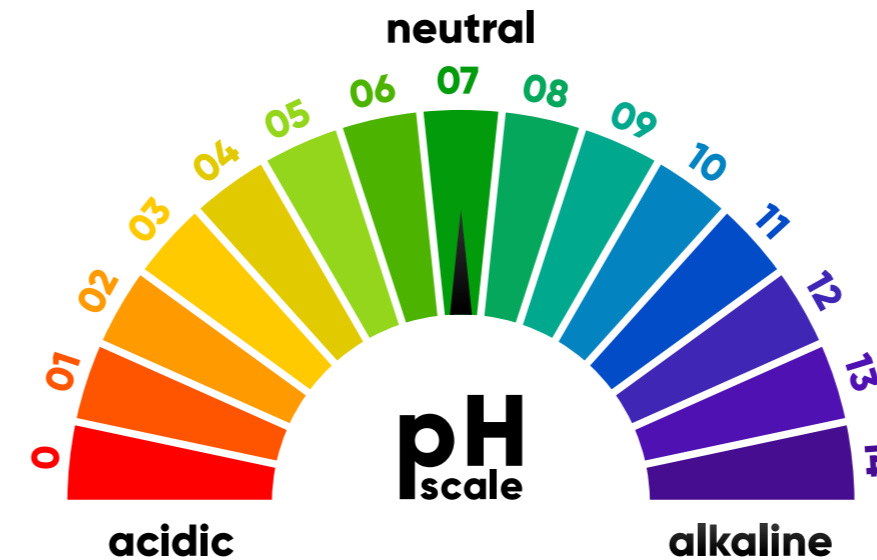
M.R.P. : ₹699 incl. of all taxes
Net. Content : 40 ml

ACTIVE INGREDIENTS

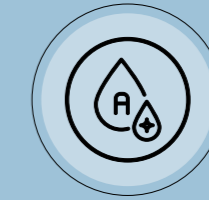
Apamarga kshara, Yavakshara, Swarjika kshara, Vitamin D3, Himalayan pink salt, Potassium oxide, Calcium gluconate

DIRECTION TO USE

Shake well before and then Drink one glass of water (200 ml.) with three drops five times per day



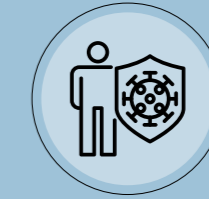
KEY BENEFITS



Makes your water alkaline, micro-clustered, rich in antioxidants and mineralized



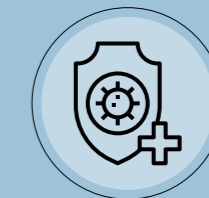
Maintain your body pH and orp levels



Allows your body to fight infections within



Make your drinking water drinkable



Prevention before the disease occurs



Support overall health

ALKOMAX CAPSULE

Teamex Alkomax Capsule is a natural superfood made from more than 600 fruits, vegetables, grains, and herbs, designed to keep your body alkaline and full of energy. It helps maintain your body's pH balance, reduces acidity, improves digestion, and supports natural detoxification. Rich in Vitamins A, C, D, E, Zinc, Iron, Calcium, Magnesium, Selenium, and Folic Acid, it strengthens bones, enhances immunity, improves nerve and brain function, and keeps your skin and hair glowing. Made with advanced CFT technology, it works deep within your cells to keep you healthy, active, and youthful. Ideal for professionals, fitness lovers, and wellness seekers, Alkomax keeps you energetic and naturally alkaline every day.

**BALANCED BODY,
BETTER LIFE**



M.R.P. : ₹1999 incl. of all taxes
Net. Content : 30 Capsules

ACTIVE INGREDIENTS

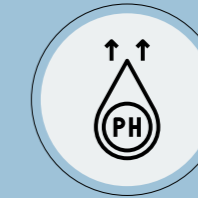
Vitamin A, Vitamin C, Vitamin D, Vitamin E, Zinc, Iron, Calcium, Magnesium, Selenium, Folic Acid.

DIRECTION TO USE

Take 30 ml daily mixed with 30 ml of warm water, either in the morning or evening.



KEY BENEFITS



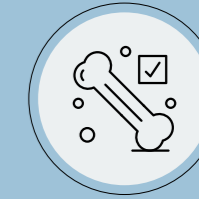
Balances body pH and reduces acidity



Keeps skin, hair, and eyes healthy



Improves energy and focus



Strengthens bones



Improves metabolism



Boosts immunity

VITAMIN B12 SPRAY

Experience the Vitamin B12 advantage with Teamex's easy-to-use supplement spray, which helps to maintain a healthy balance of vitamin B12 in your body. A lack of vitamin B12 causes many health issues and major deficiencies. This fast-absorbing formula supports red blood cell production, enhances cognitive function, boosts hair production, maintains a healthy weight and boosts natural energy levels without the need for pills or capsules. Experience the fruitfulness in each spray with our soft added flavor, which is really tasteful in taste.

**FOR VITAMIN B12
DEFECIENCY**



M.R.P. : ₹750 incl. of all taxes
Net. Content : 30 ml

ACTIVE INGREDIENTS

Cyanocobalamin (Vitamin B12), Acidity Regulator (INS330)

DIRECTION TO USE

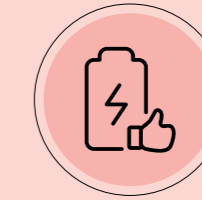
Shake the bottle well, spray into mouth (best if under the tongue).
(Maximum 4 sprays in 24 hours period)

WARNING

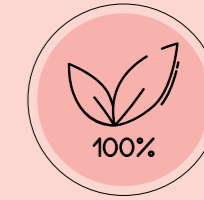
It should not be used as a substitute for a varied and well-balanced diet. If you are pregnant, nursing, taking any medicine in a medical condition, please concern your health practitioner before taking Teamex Vitamin B12 Spray.



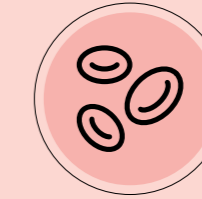
KEY BENEFITS



Helps to maintain healthy energy levels



100% vegetarian formulation



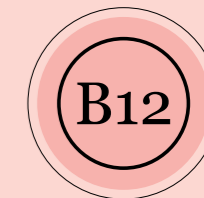
Improving red blood cells



Fuel up ion level



Helps to get strong and dense hair



Helpful in beating b12 deficiency

VITAMIN D3 SPRAY

In today's modern lifestyle, many individuals face Vitamin D3 deficiencies due to limited sun exposure, dietary restrictions, or specific health conditions. Vitamin D3, also known as the sunshine vitamin, is a crucial nutrient in maintaining bone health, supporting the immune system, and regulating mood. Often challenging to obtain sufficient amounts from sunlight and diet alone, supplementation becomes essential. Teamex's Vitamin D3 Spray is a convenient and efficient for your body to receives the required daily dose. With each easy spray, you get a burst of sunshine that contributes to stronger bones, a robust immune system, and enhanced overall health.

FOR VITAMIN D3 DEFICIENCY



M.R.P. : ₹750 incl. of all taxes
Net. Content : 30 ml

ACTIVE INGREDIENTS

Cholecalciferol (Vitamin D3), Acidity Regulator (INS330)

DIRECTION TO USE

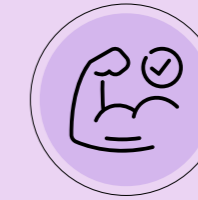
Shake the bottle well, spray into mouth (best if under the tongue).
(Maximum 4 sprays in 24 hours period)

WARNING

It should not be used as a substitute for a varied and well-balanced diet. If you are pregnant, nursing, taking any medicine in a medical condition, please concern your health practitioner before taking Teamex Vitamin D3 Spray.



KEY BENEFITS



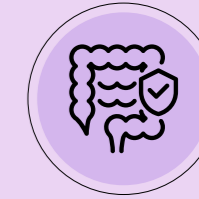
Strengthening muscles & bones



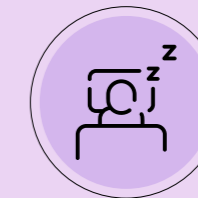
Boost up immunity naturally



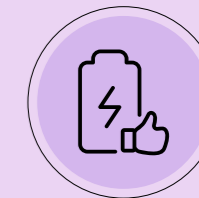
Relives cardiac problems



Helps in digestive problems



Resolve sleep disturbance



Improve stamina & strength

BIOTIN GUMMY

Unlock the secret to radiant hair, glowing skin, and unbreakable nails with Teamex Biotin Gummies. Delicious in taste and convenient in health. These gummies remarkably fuel your biotin deficiency through their effective ingredients. Gummies play a vital role in the lack of your biotin vitamins. It also helps to beat the biotin deficit. Chewable gummies make you more refreshing and energetic

FOR BIOTIN DEFICIENCY



M.R.P. : 599 incl. of all taxes
Net. Content : 30 Gummies

ACTIVE INGREDIENTS

Sesbania extract

DIRECTION TO USE

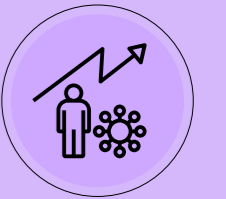
As a dietary supplement, take 1-2 gummies daily or as directed by healthcare professional. Do not exceed more than 8 gummies within 24 hours period.



KEY BENEFITS



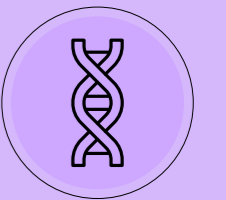
Boosts energy and moods



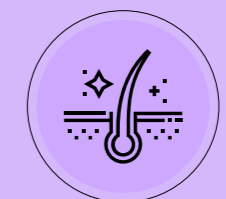
Cell growth & rebuild tissues



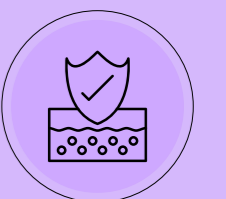
Strengthens skin & hair



Prevention of biotin deficiency



May cure damage hair & nails



Supports robust skin

DEEP SLEEP GUMMY

Teamex Deep Sleep Gummies, as their name suggests, are a supplement that helps you fall and stay asleep. These gummies contain melatonin and other sleep-promoting ingredients. Your body naturally produces melatonin to aid in sleep. In recent years, the use of melatonin as a supplement has grown rapidly. While it is primarily known for its role in promoting sleep, it also has significant benefits for other aspects of health. According to the National Sleep Foundation (NSF), melatonin production is highest in the evening, just before bedtime. In addition to making you feel sleepy, melatonin helps maintain high levels for about 12 hours, until daylight returns.

FOR HEALTHY DEEP SLEEP



M.R.P. : 599 incl. of all taxes
Net. Content : 30 Gummies

ACTIVE INGREDIENTS

Melatonin, Corn Syrup, Refined Sugar, Invert Sugar, Water, Gelling Agent INS 440, Citric Acid Acidity Regulator INS 330, Sodium Citrate Acidity Regulator 331 I

DIRECTION TO USE

As a dietary supplement, take 1-2 Gummies daily or as directed by your healthcare professional. Do not exceed more than 8 gummies within a 24-hour period.



KEY BENEFITS



Delicious & enjoyable



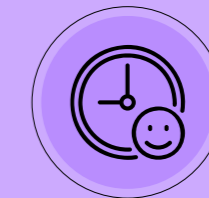
Supports optimal sleep



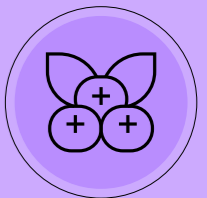
Non habit forming formula



Promotes calmness & Improves mood



Wake up refreshed



Natural black currant flavour

MULTIVITAMIN GUMMY

Teamex Multivitamin Gummies are an excellent source of nutrition for the body, as they contain essential nutrients required for overall health. These gummies offer numerous benefits for health, hair, and skin. Teamex Multivitamin Gummies are particularly beneficial for providing vital nutrients that are often lacking in the diets of vegans, vegetarians, and people with specific medical conditions. Additionally, they help recover from nutrient deficiencies, which can sometimes lead to chronic ailments.

**PERFECT
MULTIVITAMIN
BOOSTER**



M.R.P. : 599 incl. of all taxes
Net. Content : 30 Gummies

ACTIVE INGREDIENTS

Corn Syrup, Refined Sugar, Invert Sugar, Water, Gelling Agent INS 440, Citric Acid Acidity Regulator INS 330, Sodium Citrate Acidity Regulator 331 I

DIRECTION TO USE

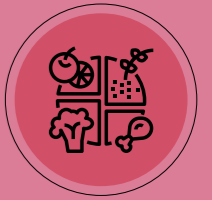
As a dietary supplement, take 1-2 Gummies daily or as directed by your healthcare professional. Do not exceed more than 8 gummies within a 24-hour period



KEY BENEFITS



Kids friendly as it has multi vitamins in one gummy



Helps to recover vitamin deficiencies



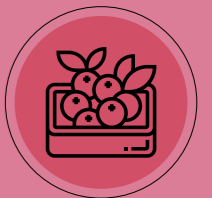
Beneficial for health, hair and skin



Immunity booster



It provides essential nutrition to body



Mix berry flavor

SHILAJIT GUMMY

Teamex Shilajit Gummy is a premium Ayurvedic gummy crafted with a potent blend of Shilajit, Black Musli, Ashwagandha, and Ginger—renowned herbs known for their revitalizing and health-boosting properties. This powerful formulation is designed to naturally enhance strength, increase energy levels, and improve stamina, making it an ideal daily wellness companion. Shilajit, a time-tested Ayurvedic ingredient, is celebrated for its ability to restore vitality and promote overall well-being, while Black Musli and Ashwagandha work together to support endurance, muscle strength, and stress relief. Ginger further aids digestion and boosts immunity, ensuring a well-rounded approach to health. Infused with a delicious imli (tamarind) flavor, these gummies make wellness effortless and enjoyable. Incorporate Teamex Shilajit Gummy into your routine and experience a natural boost in energy, resilience, and overall health every day!



M.R.P. : 699 incl. of all taxes
Net. Content : 30 Gummies

ACTIVE INGREDIENTS

Shilajit, Black Musli, Ashwagandha, Imli

DIRECTION TO USE

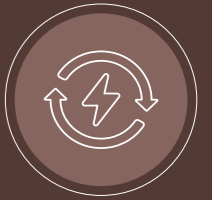
Take one gummy after a meal, twice a day. Do not exceed the recommended daily consumption.



KEY BENEFITS



Boosts Strength & Stamina



Enhances Energy Levels



Supports Immune System



Reduces Stress & Anxiety



Improves Testosterone & Performance



Easy & Tasty Consumption

Enhance Your Energy With Shilajit

BEAUTILOOK

Achieve your weight management goals with Teamex BeautiLook, a natural and safe solution for effective weight management. Its herbal formula boosts metabolism and supports a healthy diet without any side effects. BeautiLook is enriched with natural herbs, antioxidants, vitamins, and minerals that help regulate metabolism, reduce appetite, and burn stubborn fat.

PERFECT WEIGHT MANAGEMENT



M.R.P. : 3999 incl. of all taxes
Net. Content : 150 Tab

ACTIVE INGREDIENTS

BEAUTILOOK 1

Ananas, Brahmi, Galo, Ganthoda Powder, Kalimirch, Kokam, Methi Bija, Nasotar, Kuvarpathu, Shanhpushpi, Vavding, Triphala, Shu Shilajit, Shuddha Guggulu, Shunti, Motha (Musta), Nimbu

BEAUTILOOK 2

Variyali, Shankh Bhasma, Yashtimadhu, Gulab, Sakar, Avipattikar Churna, Draksh, Chitrakadi Vati, Trikatu, Triphala, Kuvarpathu

BEAUTILOOK 3

Sonamukhi, Gulab-patti, Nishoth, Triphala, Kala Namak, Ajmo, Isabgol, Papita, Yatimadhu, ShankhBhasma, Punarnava, Gokhsur, Sakar, Kuvarpathu

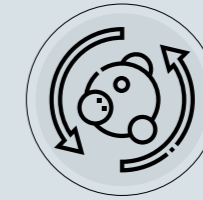
DIRECTION TO USE

BEAUTILOOK 1 : 2 tablets to be taken at early morning on an empty stomach.

BEAUTILOOK 2 : 2 tablets to be taken at 5:00 PM on an empty stomach.

BEAUTILOOK 3 : 1 tablet to be taken at night before going to bed.

KEY BENEFITS



Improves metabolism and digestion



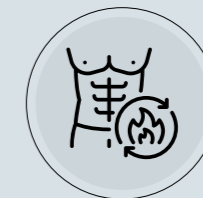
Helps in detox



Relives cardiac problems



Helps manage weight



Helps reduce body acidity



100% ayurvedic

DO LONG

Ancient Ayurveda reflects intimate lifestyle solutions as well, dating back thousands of years. Real herbs have the power to enhance our sexual intercourse and boost our stamina in private spaces. Food, smoking, medication, depression, alcohol, and many more directly affect sexual life. Ayurvedic herbs help us overcome all the diseases and help us achieve full nighttime satisfaction. Do long is the ayurvedic solution for regular intercourse life cycle in the current harmful generation, and it surely beets the same issues related to them.

FOR SEXUAL POTENCY



M.R.P. : 2000 incl. of all taxes
Net. Content : 1 Pack (50 ml Oil & 60 Tablet)

ACTIVE INGREDIENTS

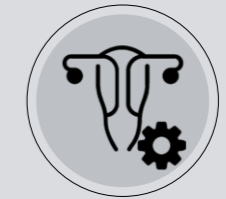
Tablet: Ashwagandha, Shilajit Shudh, Makardhwaj, Keshar
Oil: Til Oil, Kustha, Satavari, Jatamansi

DIRECTION TO USE

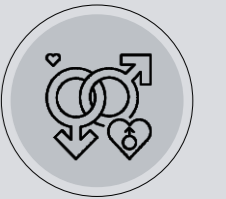
Tablet: Take two tablets with milk in the morning and evening after meal.
Oil: Take 4-5 drops of oil on palm and softly massage on intimate areas till completely absorbed. Now enjoy soothing aroma therapy experience.



KEY BENEFITS



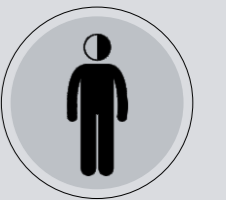
Helps to build strong genital organs



May increase your intimate performance



Overcome anxiety and depression



Helps in premature ejaculation



Better erection and lasting longer



Helps to build power and excitement

DO LONG TABLET

Ancient Ayurveda reflects intimate lifestyle solutions as well, dating back thousands of years. Real herbs have the power to enhance our sexual intercourse and boost our stamina in private spaces. Food, smoking, medication, depression, alcohol, and many more directly affect sexual life. Ayurvedic herbs help us overcome all the diseases and help us achieve full nighttime satisfaction. Do long is the ayurvedic solution for regular intercourse life cycle in the current harmful generation, and it surely beats the same issues related to them.

FOR SEXUAL POTENCY



M.R.P. : ₹1000 incl. of all taxes
Net. Content : 60 Tab

ACTIVE INGREDIENTS

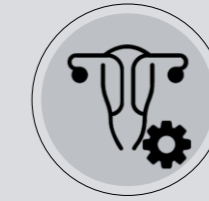
Tablet: Ashwagandha, Shilajit Shudh, Makardhwaj, Keshar

DIRECTION TO USE

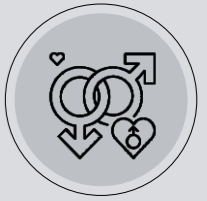
Tablet: Take two tablets with milk in the morning and evening after meal.



KEY BENEFITS



Helps to build strong genital organs



May increase your intimate performance



Overcome anxiety and depression



Helps in premature ejaculation



Better erection and lasting longer



Helps to build power and excitement

BE-CALM TABLET

Teamex 'BE-CALM Tablet' is an effective Ayurvedic proprietary medicine formulated to support cardiovascular health and promote mental peace. Powerful natural herbs like Ashwagandha, Sarpagandha, Brahmi, Shankhapushpi, and Jatamansi assist in reducing the stress associated with a modern lifestyle and the strain on the heart. It is helpful in maintaining better blood circulation, managing blood pressure, and promoting overall heart wellness.

**Calm Mind,
Healthy Heart.**



M.R.P. : ₹650 incl. of all taxes
Net. Content : 60 Tab

ACTIVE INGREDIENTS

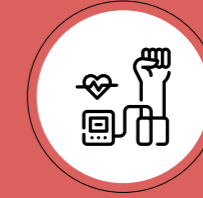
Ashwagandha, Brahmi, Gojihva Ext., Jatamansi, Jyothismathi Ext., Mukta Pishti, Pushkaramoola, Sarpagandha, Shankhapushpi.

DIRECTION TO USE

Take 1 tablet three times a day.



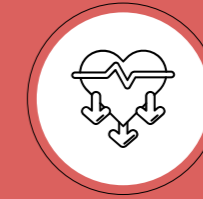
KEY BENEFITS



Helpful in managing blood pressure.



Supports better blood circulation in the body.



Helpful in reducing strain and stress on the heart.



Assists in reducing mental stress.



Promotes overall cardiovascular wellness.

ORTHO TABLET

Teamex Ortho Tablet is the powerful Ayurvedic blend to support and overcome pain and inflammation. It contains all ancient Ayurvedic herbs to satisfy various body issues. Shudhha Guggal, Hardakshal, Galo, Gokhru, Amalki, Baheda, Shunth, Satodi, etc. help provide pure relaxation from different body pains. Specially in arthritis, joint pain, muscle stiffness, back pain, knee pain, sciatica, strains, and related pain and inflammation. Regular usage not only eliminates these conditions but also strengthens our internal system, preventing any potential body pains. No matter what age or conditions are, the ortho tablet helps for all age groups.

For Joint Pain Relief



M.R.P. : 999 incl. of all taxes
Net. Content : 90 Tab

ACTIVE INGREDIENTS

Amla, Baheda, Chitrak, Deodar, Arand, Galo, Gokhru, Guggul, Shallaki guggul, Hadsankal, Harde, Haridra, Indrajav, Mari, Piper, Saragavo, Satodi, Sunth, Suva, Taj, Vavding, Vardharo

DIRECTION TO USE

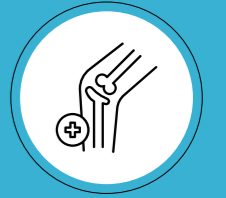
Two tablets thrice a day



KEY BENEFITS



Helps to ease joint and muscle pain



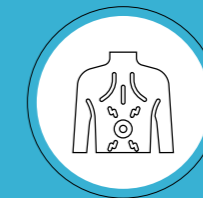
Aids in osteoarthritis and joint cartilage



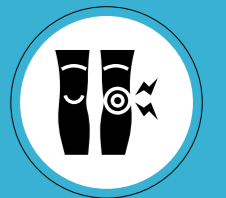
May strengthen bones and muscles



Supports old joint pain



Supports heavy swollen, and frozen shoulder



May improve flexibility of joints

CALCIUM TABLET

Teamex Calcium Tablet is a comprehensive nutritional supplement that aids in the mineralization and strengthening of bones. Calcium is an essential nutrient that helps maintain overall health and mobility. While calcium is vital for bone health, it also supports the development of joints, bones, and teeth. Additionally, it enhances calcium absorption to help maintain strong, healthy bones and strengthen muscles.

FOR CALCIUM DEFICIENCY



M.R.P. : 399 incl. of all taxes
Net. Content : 60 Tab

ACTIVE INGREDIENTS

Calcium Citrate, Magnesium Stearate, Dextrose Anhydrous, Lactose, Talcum, Sweetener

DIRECTION TO USE

It's a Chewable Tablets, take two tablets anytime in a day.

Institute of Medicine Daily Dietary Reference Intakes (DRI) for Elemental Calcium In Men and Women	
Age	DRI
1-3 years	500 mg
4-8 years	800 mg
9-18 years	1300 mg
19-50 years	1000 mg
51+ years	1200 mg
Pregnant or Lactating (under 19 years)	1300 mg
Pregnant or lactating (19-50 years)	1000 mg

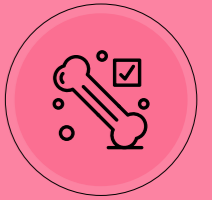
Indians are not getting enough calcium from their diet.



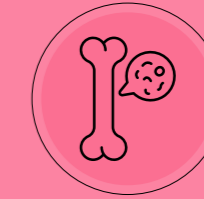
KEY BENEFITS



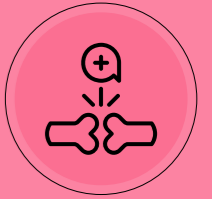
Supports nerves and muscle function



Helps maintain healthy bones



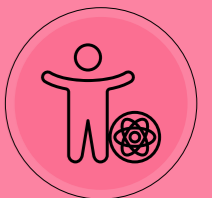
Reduces risk of osteoporosis



Helps in build strong bones



Helps in bone & joint support



Eliminates calcium deficiency in the body

DETOX TABLET

Teamex Detox Tablet is an ayurvedic formula for indigestion. It contains natural herbs like Sonmukhi, Triphala, Amla, and Isabgol, which stimulate the production of digestive enzymes. It helps enhance digestion and improve the absorption of nutrients. Teamex Detox Tablet boosts metabolism and eliminates excess toxins from the body. It is highly effective in addressing common digestive problems such as loss of appetite, bloating, and indigestion.

FOR FULL BODY DETOXIFICATION



M.R.P. : 599 incl. of all taxes
Net. Content : 30 Tab

ACTIVE INGREDIENTS

Sonamukhi, Gulab Patti, Nishoth, Triphala, Kala Namak, Aam, Isabgol, Papita, Yashtimadhu, Shankh Bhasma, Punarnava, Gokhsur, Kuvarpathu

DIRECTION TO USE

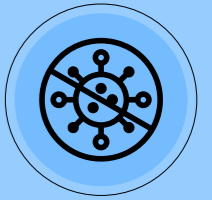
1 tablet to be taken before going to bed at night.



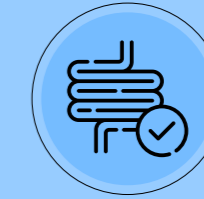
KEY BENEFITS



Helps in digestion,
improves metabolism



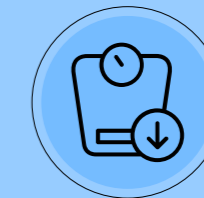
Helps in flushing out
harmful toxins



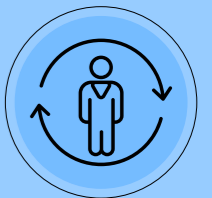
Helps in bloating and
indigestion



Improves
immunity



Helps in
weight loss



Detoxify
full body

SPIRULINA TABLET

The highly nutritious supplement, organic Spirulina Tablet, is rich in protein, vitamins, minerals, and antioxidants, fulfilling your daily micronutrient needs. Spirulina is easy to digest and helps detoxify, cleanse, and energize your body. Spirulina Tablet is an excellent source of antioxidants, which protect against oxidative damage. Spirulina supplements are also highly effective against allergic rhinitis, helping to reduce various symptoms. Additionally, they may provide multiple exercise benefits, including enhanced endurance and increased muscle strength.

**PERFECT VEGETERIAN
SUPERFOOD**



M.R.P. : ₹699 incl. of all taxes
Net. Content : 60 Tab

ACTIVE INGREDIENTS

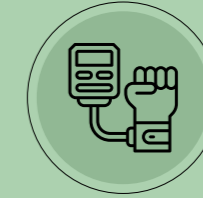
Organic Spirulina Tablet

DIRECTION TO USE

Take 2 tablets twice a day at the time of breakfast and dinner daily or as suggested by a healthcare professional.



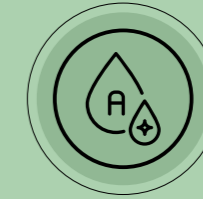
KEY BENEFITS



May reduce
blood pressure



May have anti-cancer
properties



Powerful
antioxidant



Anti-inflammatory
properties



Best nutritional
supplement



100%
Vegetarian

GARLIC TABLET

Garlic Tablet is an Ayurvedic classical formulation designed to support heart wellness. Enriched with the natural properties of Garlic, this formulation is traditionally known for its nutritional value and wellness-supporting qualities. Modern lifestyles can often affect daily health balance, this formulation may help support overall wellness, energy balance, and general health maintenance. It may also help support immunity, assist in maintaining healthy blood pressure, and support healthy cholesterol levels as part of a balanced lifestyle.

**Healthy Heart,
Secure Life.**



M.R.P. : ₹650 incl. of all taxes
Net. Content : 60 Tab

ACTIVE INGREDIENTS

Garlic Powder (Allium Sativum) – 500 mg
Other Excipients – Q.S.

DIRECTION TO USE

1. Take one tablet at night before going to bed.
2. Or consume as advised by a healthcare professional.



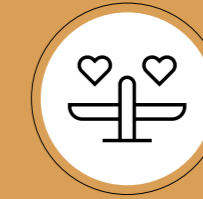
KEY BENEFITS



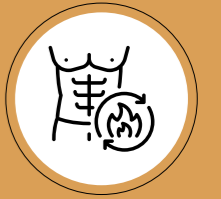
Helps support heart wellness



Formulated with traditionally used Ayurvedic ingredients



Helps support healthy cholesterol balance



Helps support metabolic wellness



Supports overall health and wellness



May help support immunity

BOSWELLIA CAPSULES

Teamex Boswellia Capsules contain an active component from Boswellia serrata gum resin extract, which works synergistically to provide potent anti-inflammatory effects that support joint health. Regular use may help reduce pain associated with inflammation, such as joint pain, muscle pain, and nerve pain. It offers long-lasting pain relief, improves joint flexibility, reduces muscle stiffness, and supports cartilage health.

FOR JOINT HEALTH



M.R.P. : ₹999 incl. of all taxes
Net. Content : 30 Cap

ACTIVE INGREDIENTS

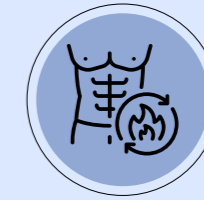
Boswellia serrata extract (Indian frankincense extract-gum resin), 3-Acetyl-11-keto-Beta- boswellic acid (AKBA)

DIRECTION TO USE

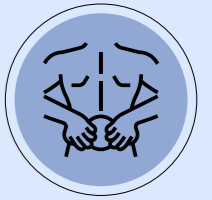
Take one capsule daily before a meal or as suggested by healthcare professional.



KEY BENEFITS



Has potent anti-inflammatory properties



Helpful in muscle and joint support



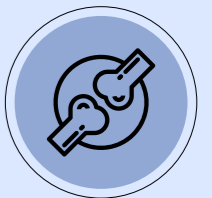
Helps maintain joint flexibility and mobility



Soothes soft tissues of joints



Helps relieve pain and inflammation



Support healthy joints

NANO CURCUMIN CAPSULE

Teamex Nano Curcumin Capsules help fight inflammation and reduce the risk of various chronic diseases. Nano curcumin contains highly pure turmeric extract, which offers many health benefits with regular use. It is particularly beneficial for conditions like arthritis, heart disease, respiratory diseases, and viral or bacterial infections. The Nano Curcumin Capsule is also highly effective in addressing heart disease, cancer, metabolic syndrome, and Alzheimer's disease.

FOR IMPROVE HEART FUNCTIONALITY



M.R.P. : ₹799 incl. of all taxes
Net. Content : 30 Cap

ACTIVE INGREDIENTS

Nano curcumin, Turmeric Extract (Curcuminoids)

DIRECTION TO USE

1 capsule after meal or as directed by the healthcare professional



KEY BENEFITS



Strengthens immune system



Effective anti-microbial



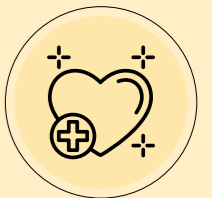
Potent anti-inflammatory and antioxidant



Promotes joints and muscle health



Improve lungs health



Relieves Heart Disease

STOP UP-D TABLET

Teamex Stop Up-D is a herbal Sugar Supplement made with unique herbs ensuring 100 % water solubility & bioavailability of active ingredients, which means 100 % absorbed by the body. Thus offering higher efficacy & desired action in Sugar care. Our Diabetic Supplement is packed with the goodness of Ayurvedic herbs. Helps you to manage Blood Sugar & get better control of Sugar. Manage Sugar by balancing your body's insulin production and controls Pancreatic disorder. Natural and Free from Fillers, Binders, Preservatives, Synthetic Chemicals, and Artificial colours. As an amalgamation of natural ingredients, it is a super healthy choice for everyone.

**FOR IMPROVE
INSULIN FUNCTION**



M.R.P. : ₹650 incl. of all taxes
Net. Content : 60 Tab

ACTIVE INGREDIENTS

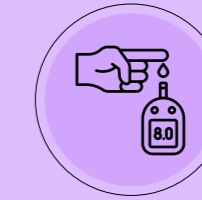
Neem Leaf, Mango Leaf, Amla, Turmeric, Bang Bhasma

DIRECTION TO USE

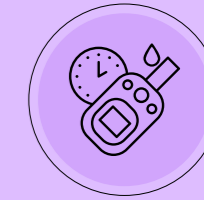
2 Tablets twice a day before meal or as directed by a healthcare professional.



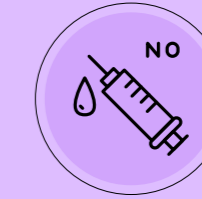
KEY BENEFITS



Helps to control blood sugar level



Control insulin to maintain sugar level



Improve insulin sensitivity



Heart blockage risk was decreased



Lowered the risk of cardiac failure



Reduced the chances of infection (gangrene)

ORTHO OIL

Teamex Ortho Oil is enriched with potent Ayurvedic herbs that help relieve pain and aches. Its 100% natural formula provides instant relief from backache, joint pain, and muscle strains. Teamex Ortho Oil derives its healing properties from natural extracts, which are known as powerful pain relievers in the ancient medicinal science of Ayurveda. Regular use of this oil can provide fast and long-lasting relief from various joint and muscle pains such as arthritis, strains, sprains, spondylitis, and sciatica. It helps to rebuild and maintain joint flexibility, alleviating discomfort caused by age, weight, accidents, or sports-related stress. Additionally, it improves flexibility, relaxes tight muscles, and reduces soreness.

FOR JOINT PAIN



M.R.P. : ₹299 incl. of all taxes
Net. Content : 50 ml

ACTIVE INGREDIENTS

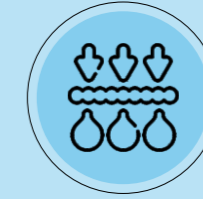
Mahanarayana Oil, Mahavishgarbh Oil, Nirgundi Oil, Maha Mass Oil, Gandhapura (Gaultheria Fragrantissima), Turpentine Oil, Nilgiri (Eucalyptus Globulus)

DIRECTION TO USE

Apply sufficient quantity of Ortho Oil (Approx 4 ml) and gently massage over the affected area 2- 4 times daily to obtain maximum relief. Avoid open wound, bruise, nasal & eye contact.



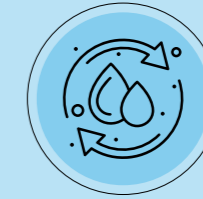
KEY BENEFITS



Easily absorbed for quick relief



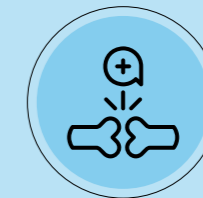
Helps to provide fast relief



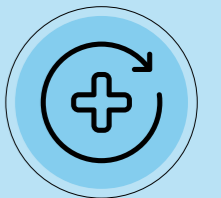
Helps to improve blood circulation in the applied areas



Helps to relieve stiffness and improves mobility



Helps to strengthen ligaments



Aids in the healing process

PROTEIN POWDER

Teamex Protein Powder contains an advanced nutritional formula designed to meet your daily protein requirements. This supplement enhances metabolism and delivers high-quality nutrients to improve daily protein intake. It supports muscle development, improves functional coordination, and enhances protein absorption. Teamex Protein Powder is enriched with essential vitamins and minerals that help boost immunity, build strength, and provide energy. It includes nutrients that strengthen bones, increase muscle mass, and improve overall body composition, helping to fulfil your protein needs. Whether you're a gymgoer, bodybuilder, or simply looking to adopt a healthy and active lifestyle, this protein powder is an excellent choice for you.

PERFECT PROTEIN
SUPPLEMENT



M.R.P. : ₹999 & ₹550 incl. of all taxes
Net. Content : 500 gm & 200 gm

ACTIVE INGREDIENTS

Whey Protein, Milk Solids, Fos, Dha, Inositol, Dietary Fiber, Maltodextrin, Sucralose, Malt Extract, Dextrose, Vitamins, Minerals, Cocoa Solids

DIRECTION TO USE

Take 3 & 4 scoop in 150 & 180 ml respectively, with lukewarm water or milk every day

- 35% Protein
- Sugar Free



KEY BENEFITS



Helpful in speedy recovery
& lean muscles



Provides better
stamina and immunity



Enhances digestion
and absorption



Essential for
muscle growth



Help in building
bone strength



Maintain Protei
Intake

NEODYMIUM KNEE BELT

The knee belt contains several neodymium magnets designed to enhance knee pain relief. Magnetic therapy is known for boosting energy and improving overall health. Magnets have the ability to penetrate every cell and tissue in the human body, helping to alleviate pain and discomfort. Many athletes and doctors confirm that using magnets to treat aches and pains has numerous benefits without any negative side effects.

USEFUL IN KNEE PAIN



M.R.P. : ₹1350 incl. of all taxes
Net. Content : 1 Piece

CAUTION

Do not wash the Teamex knee belt

DIRECTION TO USE

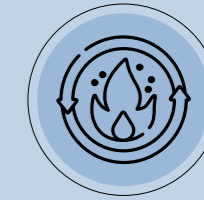
Place it over your knee
Adjust the knee brace to fit the entire knee
You are now ready to perform your workout



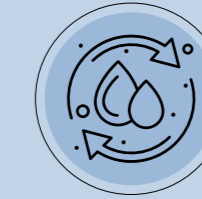
KEY BENEFITS



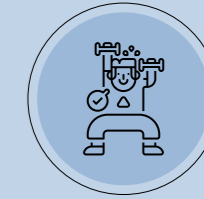
Helpful for various types of knee pain



Help to reduce inflammation



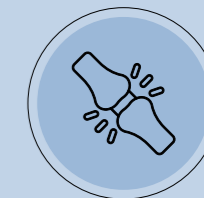
Increase blood circulation



Comforts in any sports or gym activity



Support knee injuries



Relieves joint pain

NEODYMIUM WAIST BELT

The Neodymium waist belt is made with neodymium magnets, which are known for their therapeutic benefits in aiding various parts of the body. This waist belt contains 30 neodymium magnets that help relieve pain and aches while improving blood circulation. Healthcare professionals often recommend magnet therapy for its ability to promote healing in the human body, making this waist belt a great alternative for pain relief and recovery.

**USEFUL IN
WAIST PAIN**



M.R.P. : ₹2100 incl. of all taxes
Net. Content : 1 Piece

CAUTION

Do not wash the Teamex waist belt

DIRECTION TO USE

Place it over your waist
Adjust the waist brace to fit the entire waist
You are now ready to perform your workout



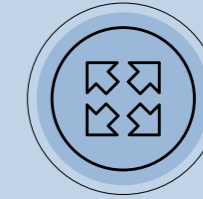
KEY BENEFITS



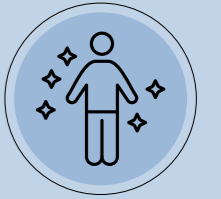
30 embedded
therapeutic magnets



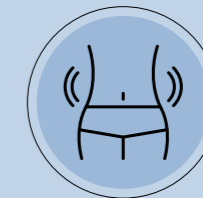
Made from long lasting
premium quality neoprene



Fits many
different sizes



Provides full
back support



Designed for
general support

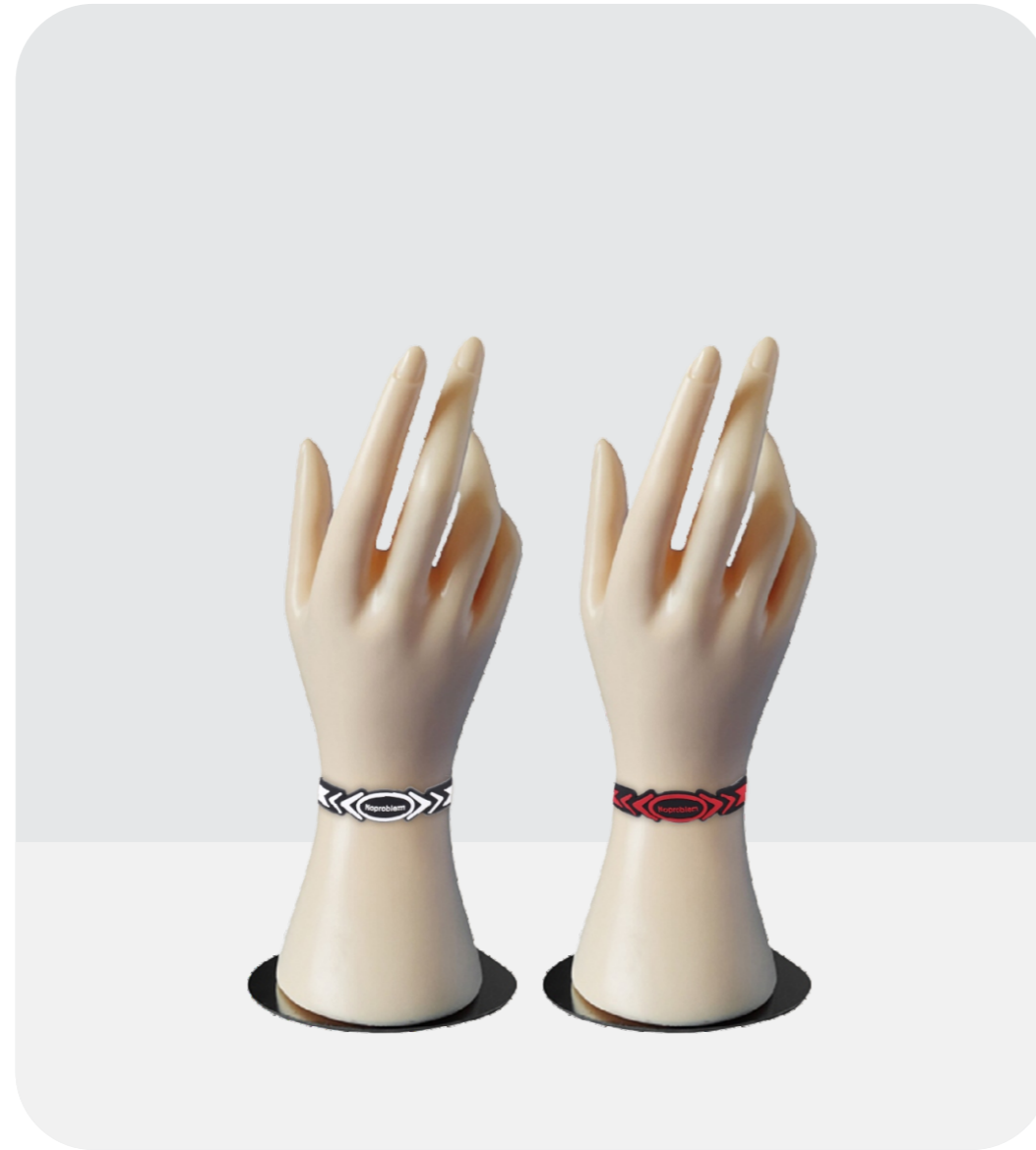


supports
back pain

NO PROBLEM ION BALANCE

The No Problem Negative Ion Balance Bracelet is a unique product, certified by the US FDA and exclusively distributed by Teamex. It is made from the precious mineral tourmaline stone, which emits negative ions, also known as the "vitamins of the air." Negative ions offer numerous benefits, including detoxification, improved blood circulation, and enhanced immune system function. This bracelet generates over 2,500 negative ions, which are beneficial for addressing various health conditions.

SECURING FROM NEGATIVE ION



M.R.P. : ₹7500 (Red & White) incl. of all taxes
Net. Content : 1 Piece

DIRECTION TO USE

You can wear on your wrist



KEY BENEFITS



It increases
your strength



It relieves the stress, so
it causes better sleep



It provides better
concentration



helps to reduce various
types of body pain



It helps in detoxification,
blood circulation



It boosts your energy and
immunity system

SLIM TEA

Enjoying a cup of Slim Tea with licorice and cinnamon is a refreshing way to support your wellness and weight loss goals. The natural ingredients in this tea, such as hibiscus and ginger, are known to aid digestion and boost metabolism, helping you burn calories more efficiently. The delicate infusion of freshly picked hibiscus flowers offers a naturally pleasant taste while enhancing your skin's radiance. Slim Tea assists with easy weight management while helping you maintain an attractive shape.

HEALTH BENEFICIAL TEA



M.R.P. : ₹750 incl. of all taxes
Net. Content : 100 gm

ACTIVE INGREDIENTS

Hibiscus, Fennel Seeds, Cinnamon, Turmeric, Licorice, Ginger

DIRECTION TO USE

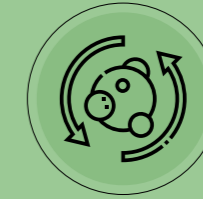
1. Take a 1 T-spoon of slim tea (5 G. Approx)
2. Mix in a cup of hot water.
3. Strain it into your tea cup.
4. Enjoy the brew, be slim.



KEY BENEFITS



100% pure and natural



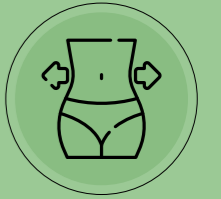
Enhance metabolism



Supports high immunity



No caffeine, no preservatives



Helps to reduce fat



Helps to digest and detoxify