


MARKETED BY:  **TEAMEX**
RETAIL LTD

421, 4th Floor, Vishala Supreme, Opp. Torrent
Power, SP Ring Road, Nikol, Ahmedabad- 382350.

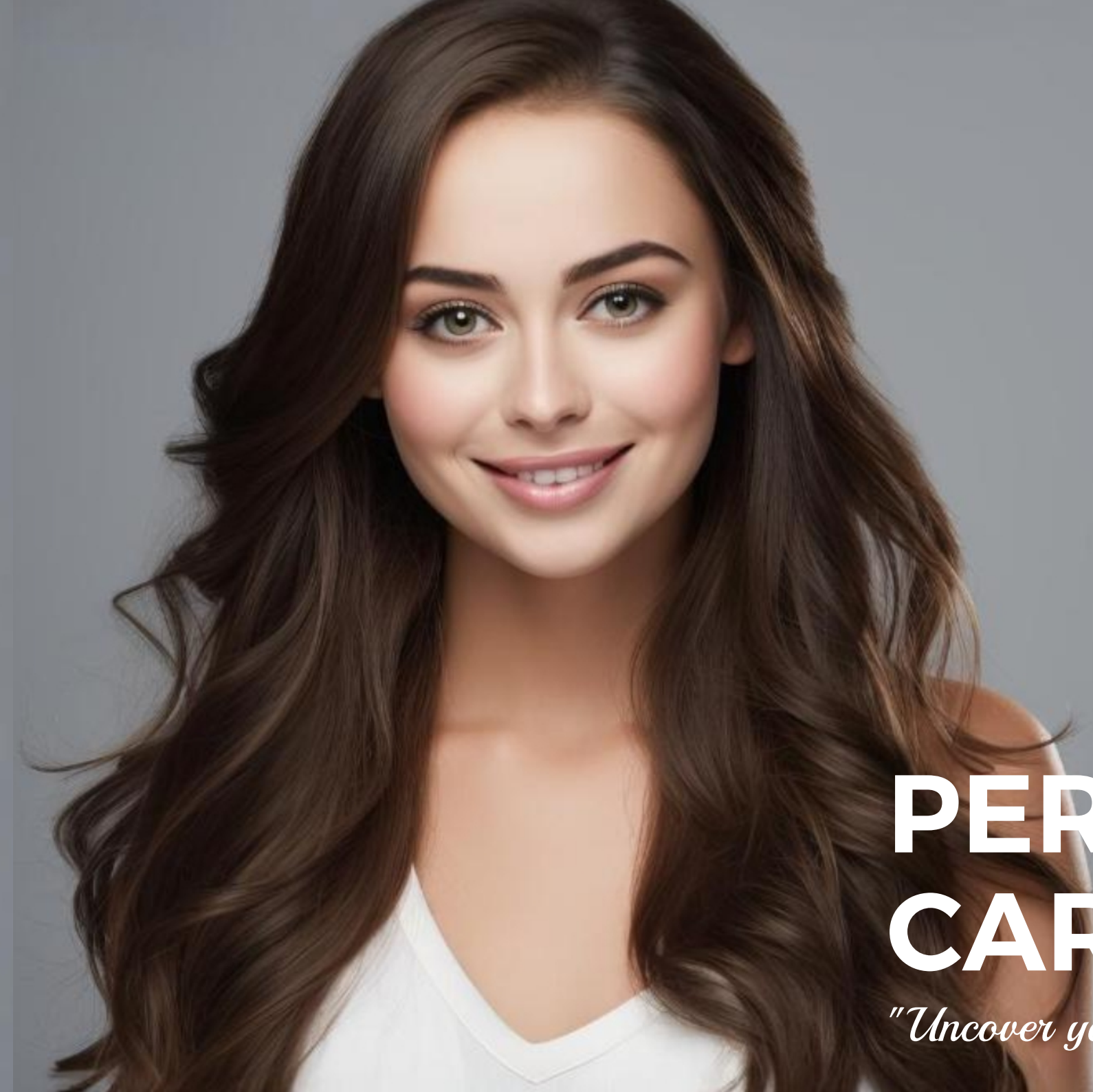
COUNTRY OF ORIGIN INDIA

Cust. Care : +91 7069 121213
support@teamex.in | www.teamex.in

 teamex.official  teamex_ltd  teamexretail

**PERSONAL
CARE**

"Uncover your inner beauty"



THE COMPANY

Teamex Retail Ltd. This name was initially made public in 2013, and Teamex had just a few items at the time. Today, we are extremely glad to state that the firm that began in 2013 currently caters to over 180 prime-quality products to meet people's requirements.

We hold an ISO 9001-2015 certification. Our quality and useful products are not only medicines but life-enhancing and environment-oriented products, and we fully consider human values.

The marketing plan and management have successfully implemented a sustainable system that has yielded positive results. With very high values in mind, we have only one goal is to reach out to enthusiastic and efficient individuals and uplift them economically and socially. That's why our motto is "Let's win together".

Ahmedabad is fortunate to have our head office there, where the eager and enthusiastic youth in the Teamex family are always ready for the convenience and comfort of the customers. The main office also has a conference hall, administration, and other necessary facilities, as well as a large warehouse where we make every effort to satisfy the needs of the customers.

Personal Care





HAIR CARE

Utilise all-natural products to fortify, shine, and beautify your hair.

TEAMEX

Shine on hair

Apply hair oil to nourish and strengthen, then finish with hair serum for added moisture and protection. This keeps your hair vibrant, healthy, and manageable.



DEO BODY POWDER

Start your day with the refreshing scent of Teamex Deo Body Powder. Infused with natural essences, Teamex Deo Powder is highly absorbent, leaving your skin smooth and revitalized. Its fresh, uplifting citrus aroma keeps you feeling refreshed for hours. Not only does it provide a captivating fragrance, but it also offers essential protection against sweat, effectively controlling body odor during active moments. Safe for full-body use, this Deo Body Powder is suitable for all skin types, helping maintain lasting freshness throughout the day

M.R.P. : ₹180 inc. of all taxes
Net Content : 180 gm



ACTIVE INGREDIENTS :
Talc (Hydrated Magnesium Silicate), Calcium Carbonate, Fragrance

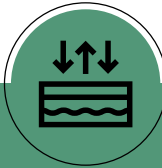
DIRECTION TO USE :
For best result, use the talc right after shower everyday



KEY BENEFITS



DEFENDS AGAINST
ODOR AND SWEAT



CREATES A
BREATHABLE
LAYER ON THE SKIN



GLIDES ON
EASILY WITHOUT
STICKING



DRIES QUICKLY AND
DOES NOT CLOG
SKIN PORES



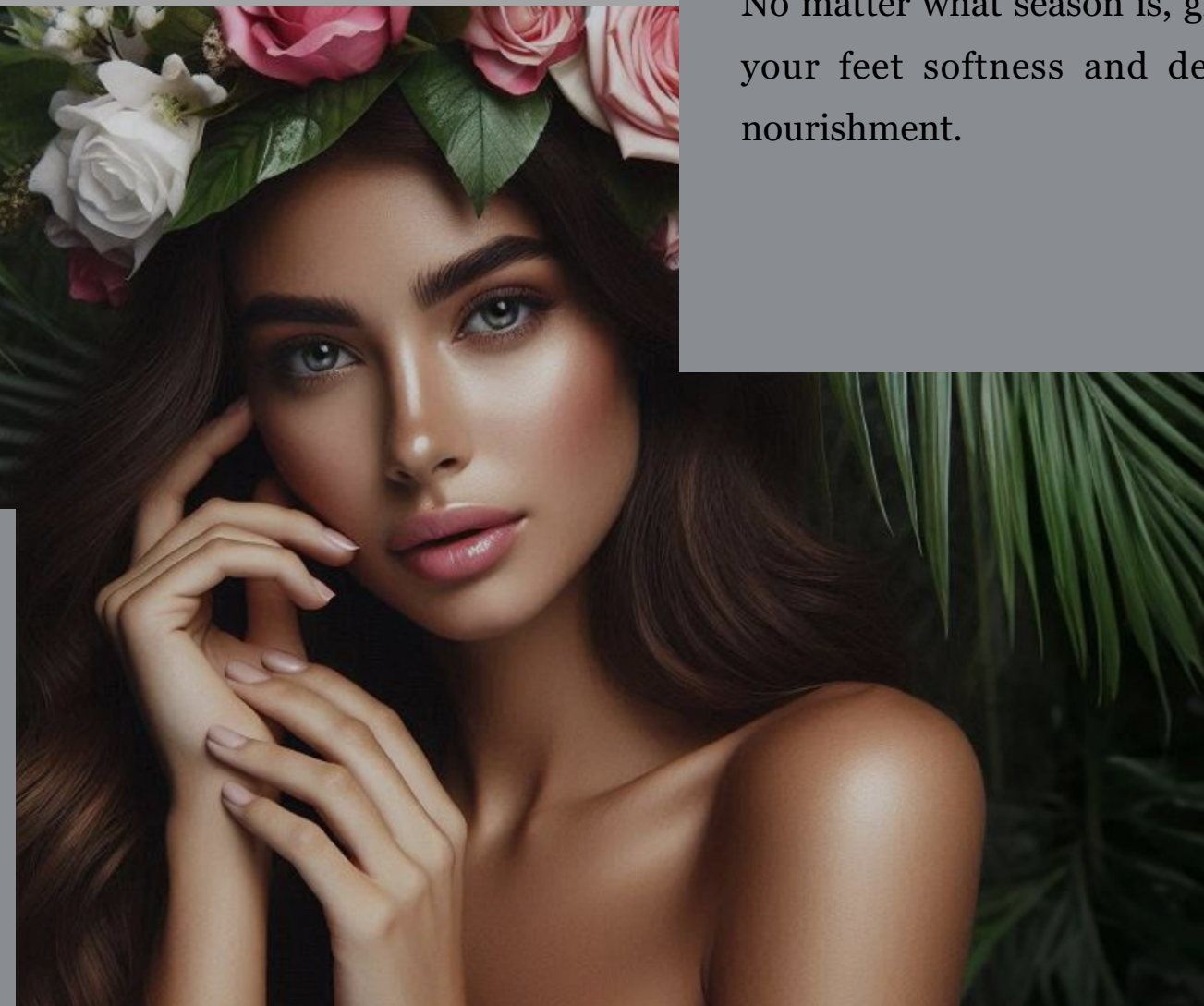
HELP TO
ENERGIZE SKIN



GIVES ALLERGEN-
FREE FRAGRANCE

LIP CARE

Nurture your lips with Natural ingredients. It hydrates and gives soft, supple feel all day long.



FOOT CARE

No matter what season is, give your feet softness and deep nourishment.

TEAMEX

Mix fruit lip balm nourishes and hydrates lips, leaving them soft and smooth with a refreshing fruity flavor. It protects against dryness and keeps lips moisturized.



Foot care cream hydrates and softens dry, rough skin, preventing cracks and calluses. Regular use keeps feet smooth and comfortable.

MIX FRUIT LIP BALM

Teamex Mix-Fruit Lip Balm is packed with concentrated fruit extracts that gently nourish cracked, chapped lips, leaving them hydrated and soft. It helps reduce lip pigmentation and buffs away dead skin for naturally nourished lips. This organic lip balm is perfect for dry lips, with its long-lasting, creamy formula that nurtures, moisturizes, and provides a soft, smooth feel to your lips

M.R.P. : ₹149 inc. of all taxes
Net Content : 10 gm



ACTIVE INGREDIENTS :
Beeswax, Coconut Oil, Sunflower Seed Oil,
Lanolin, Flavor

DIRECTION TO USE :
Apply Teamex Mix Fruit Lip Balm evenly on your
lips, as often as needed



KEY BENEFITS



HELPS TO
PROTECT SUN
BURN AND DAMAGE



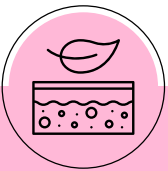
IDEAL FOR DRY
AND CHAPPED LIPS



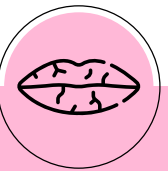
IT LEAVES A
SUBTLE SHINE
ON THE LIPS



HELPS TO GIVE
INSTANT
MOISTURIZERS



HELPS TO MAKE
LIPS SOFT AND
SUPPLE



HEALS THE CUTS
ON THE LIPS

FOOT CARE CREAM

Teamex Foot Care Cream, enriched with shea butter and lavender oil, deeply moisturizes and nourishes your feet. With regular use, it helps prevent cracked heels, leaving feet soft and supple. This cream soothes and hydrates dry, irritated feet, providing natural care and repair. Its ultra-moisturizing and cell-regenerating properties ensure long-lasting hydration while effectively healing cracked heels

M.R.P. : ₹175 inc. of all taxes
Net Content : 50 gm



ACTIVE INGREDIENTS :

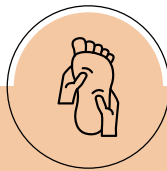
Shea Butter, Lavender Oil, Aloe vera Leaf Juice, Blackseed Oil, Coconut Oil, Mango Butter, Calendula Oil, Arnica Oil, Avocado Oil, Aqua, Cetearyl Oliviate (and) Sorbitan Oliviate, Purasal Moist XS, Sodium Gluconate

DIRECTION TO USE :

Using both hands, apply the cream to the feet using circular motions



KEY BENEFITS



DEEP MOISTURIZING
MASSAGE CREAM



SUITABLE FOR
ALL SKIN TYPES



HEALS CRACKED
FEET



PROVIDES AMPLE
NOURISHMENT
TO THE SKIN



REPAIRS DRY &
DEHYDRATED SKIN



RELAXES
MUSCLES



ORAL CARE

In addition to protecting your mouth and teeth, it also leaves you with a pleasant, long-lasting scent of freshness.



Herbal Toothpaste

Toothpaste cleans teeth, freshens breath, and helps prevent cavities. Regular use keeps your mouth healthy and your smile bright.

NONI TOOTHPAST

- STRONG TEETH
- FIGHTS GERMS



NONI TOOTHPASTE

Teamex Noni Toothpaste is formulated with noni and aloe vera extracts to provide strong, fresh, and healthy teeth and gums. This toothpaste protects against germ infections, prevents cavities and tooth decay, removes stains, eliminates bad breath, and keeps teeth and gums strong. This herbal toothpaste ensures complete oral hygiene and provides long-lasting freshness

M.R.P. : ₹99 inc. of all taxes
Net Content : (75gm)
M.R.P. : ₹170 inc. of all taxes
Net Content : (150gm)



ACTIVE INGREDIENTS :

Noni Ext., Aloevera Ext., Clove Oil, Camphor, Mentha Piperita Ext., Menthol, Peppermint Oil, SCMC, Sodium Saccharin, PPT Silica, Calcium Carbonate, Sodium Benzoate, Coco Amido Propyl Betaine, TriSodium Orthophosphate, Glycerin

DIRECTION TO USE :

2-3 gm (full length brush amount) Twice a day or as directed by a dentist or physician



KEY BENEFITS



PREVENTS
TOOTH DECAY



REDUCTION IN
GUM BLEEDING



KEEPS TEETH
STRONG AND
HEALTHY



BRIGHTENS TEETH
NATURALLY



HELPS ELIMINATE
BACTERIA CAUSING
BAD BREATH



HELPS IN ORAL
SUBMUCOUS
FIBROSIS



WOMEN HYGIENE

Assisting all women with their menstrual day problems by providing reliable protection, that is both gentle and damage-free.

Shewell

Sanitary pad

Sanitary pads offer protection and comfort during menstruation, absorbing flow and ensuring hygiene by preventing leaks.



SHEWELL SANITARY PAD

Teamex Shewell Sanitary Pads are ultra-soft, comfortable, and provide optimal coverage for a rash-free experience. These pads are specially crafted from organic cotton with a multi-layer absorption formula that prevents backflow, stains, and side leakage. The exceptionally absorbent soft pads are thoughtfully designed to support you and manage your flow throughout the day and night, allowing you to feel confident and worry-free about leakage

M.R.P. : ₹199 inc. of all taxes
Net Content : 10 pads(XL), 8 pads(XXL)



DIRECTION TO USE :

- Step 1:** Remove the back paper from the pad.
- Step 2:** Stick the pad on your panty and press firmly.
- Step 3:** Release the back paper of the pad wings.
- Step 4:** Fold the pad wings around the panty and stick them well.

HOW TO DISPOSE:

- Step 1:** Roll them well and wrap them in any disposable bag.
- Step 2:** Throw safely into the dustbin. Do not flush.

KEY BENEFITS

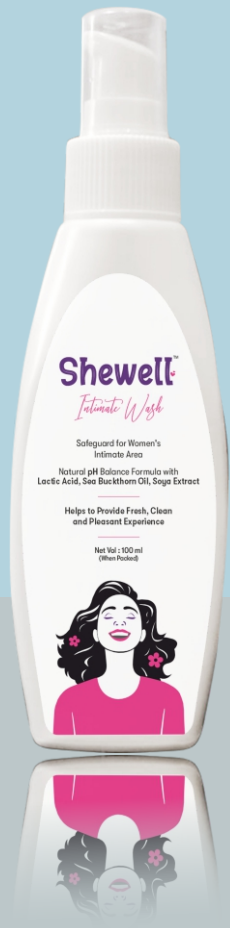
EXTRA-LONG AND WIDE BACK	PROVIDES SUPERIOR PROTECTION	NATURAL COTTON FEEL	BIODEGRADABLE	SUPER DRY FEEL	NO HARSH CHEMICALS



INTIMATE WASH

SheWell Intimate Wash is a gentle cleanser made with ingredients chosen specifically for use on the sensitive skin of the intimate area. It helps maintain the natural pH balance and promotes a healthy vaginal environment, reducing the risk of infections and irritation. The soothing ingredients used in this product, such as sea buckthorn oil, soya extract, and tea tree oil, are gentler and non-harmful than those found in any soaps or body washes. It is ideal for daily use, especially during menstruation, pregnancy, or after intercourse. Intimate Wash aim to provide a fresh, clean, and pleasant experience to the women's intimate area.

M.R.P. : ₹299 inc. of all taxes
Net Content : 100 ML



DIRECTION TO USE :

- Step 1:** Clean your intimate area
- Step 2:** Squeeze gently and take few drops
- Step 3:** Apply externally covering full area
- Step4:** Wash off with clean water

ACTIVE INGREDIENTS :

Soya Extract,Sea Buckthorn,Tea Tree Oil,JucyLemon



KEY BENEFITS



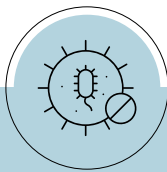
Gentle and safe for regular usage



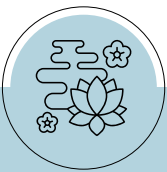
Helps to balance vaginal pH level



Soothes inflammation, itching, and redness



Protects against bacterial and fungal infection



Gives freshness and pleasant fragrance



Ideal for pregnancy, menstruation, and intercourse

HAND WASH

Keep your hands clean, safe, and hygienic with Teamex Handwash. Enriched with natural ingredients, this gentle foaming hand wash leaves your hands clean, soft, and supple after every use. It eliminates 99.99% of bacteria, viruses, and fungi within 30 seconds while soothing, hydrating, and moisturizing your skin. Suitable and safe for all skin types

M.R.P. : ₹230 inc. of all taxes
Net Content : 500 ml



ACTIVE INGREDIENTS :

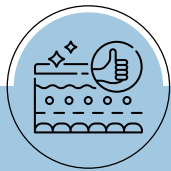
Sodium Lauryl Ether Sulfate, Cocamidopropyl Betaine, Glycerin, Vitamin E, Sodium Chloride, Fragrance, Colour 42090

DIRECTION TO USE :

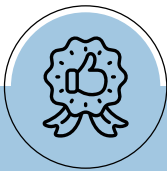
Squeeze bottle gently and take 1 to 2 drops on wet hands. Work up a rich lather and rinse thoroughly



KEY BENEFITS



SUITS ALL
SKIN TYPES



SMELLS
GOOD



DEEP
CLEANSES



PROVIDES
HYDRATION



REMOVE
GERMS



EFFECTIVELY
CLEAN HANDS